

T.6 N., R.15 W., San Bernardino Meridian, California: Unsurveyed.

PLAT OF HOMESTEAD ENTRY No 09135

Dated March 15, 1910.

BEN HICKEN, ENTRYMAN

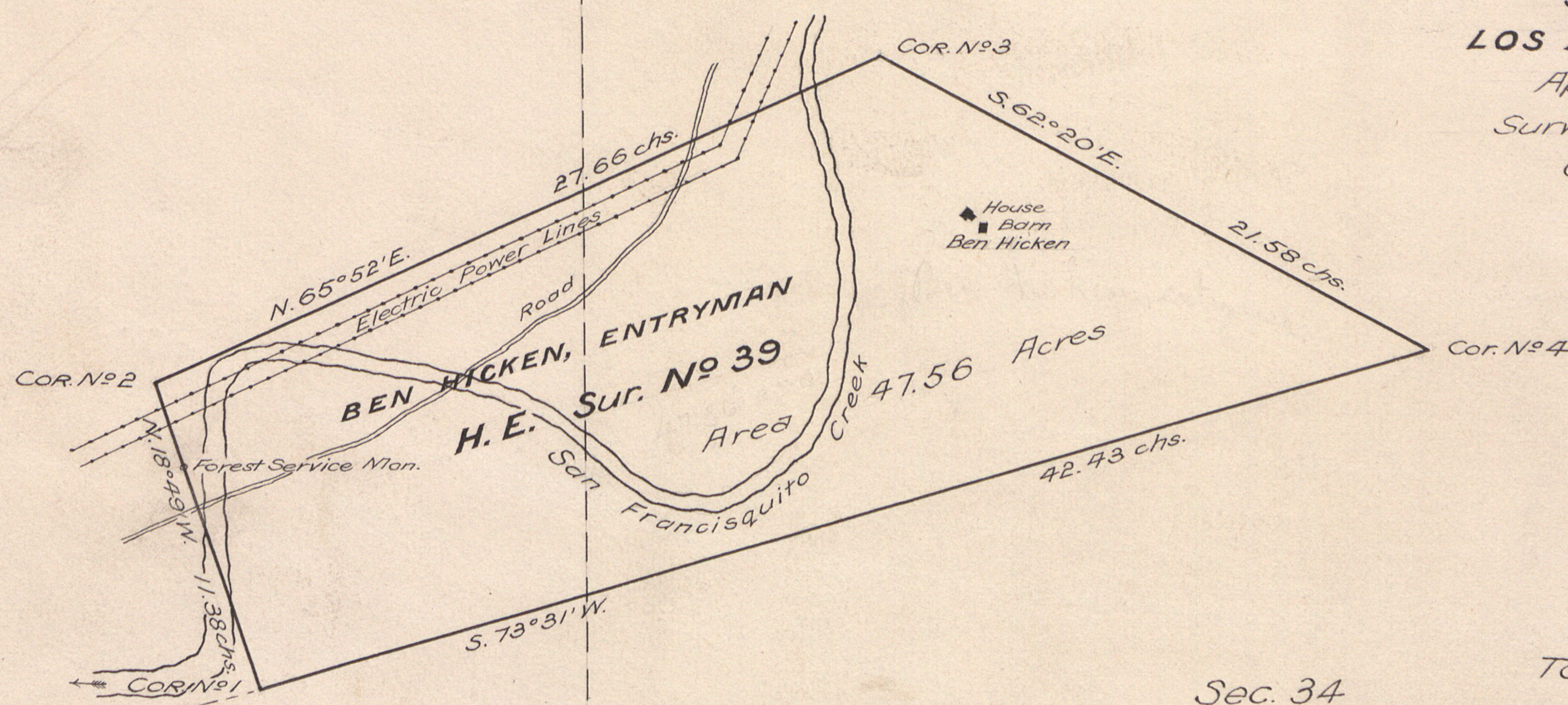
List No 5-142, dated December 29, 1909, SANTA BARBARA NATIONAL FOREST.

LOS ANGELES LAND OFFICE, CALIFORNIA.

Approximate Secs. 33 and 34, T.6 N., R.15 W., S.B.M.

Surveyed by Legrand Friel, U. S. Deputy Surveyor, Under Special Instructions dated May 19, 1910.

Scale: 5 chains to the inch.



AREA Total area of H.E. Sur. No 39, 47.56 Acres.

The above plat of Homestead Entry No 09135, designated as H. E. Survey No 39, on unsurveyed land in Township No 6 North, Range No 15 West, San Bernardino Meridian, California, is strictly conformable to the field notes of the survey thereof on file in this office, which have been examined and approved. U. S. Surveyor-General's Office, San Francisco, California, January 30, 1911.

E. A. Archer U. S. Surveyor-General for California.